

# CHECKIT® Comparator

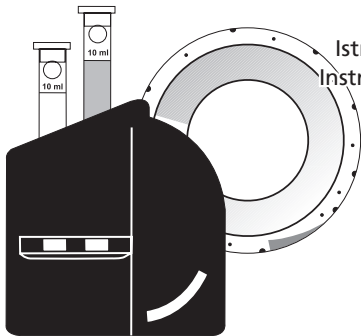
Bedienungsanleitung (DE)

Instruction Manual (GB)

Mode d'emploi (FR)

Istruzioni per l'uso (IT)

Instrucciones de uso (ES)



Ozon  
Ozone  
(also in the presence  
of chlorine)

**Tablet Reagent**

## Anleitung zur Bestimmung von Ozon (DPD)

**CHECKIT®Disc**  
Ozon (DPD)

**Messbereich**  
0 - 1,0 mg/l O<sub>3</sub>

**Bestell-Nr.**  
14 62 70

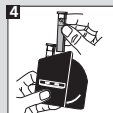
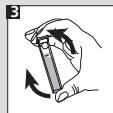
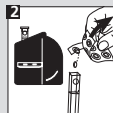
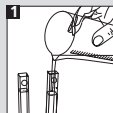
**Genauigkeit:** ± 5 % vom Messbereichsendwert

**Tabletten**  
DPD No. 4

**Bestell-Nr. per 100 Stück**  
51 12 20 BT

### Ozon (DPD No. 4-Tablette)

- 1 Beide Küvetten mit der Probe bis zur 10 ml-Marke füllen.
- 2 Eine Küvette als Blindprobe in die linke Kammer des Comparators stellen. In die andere Küvette eine DPD No. 4-Tablette geben und mit dem Deckel verschließen.
- 3 Die Tablette durch Umschwenken auflösen.
- 4 Die zweite Küvette in die rechte Kammer des Comparators stellen.
- 5 Nach dem Abgleich mit der CHECKIT®Disc wird das Ergebnis in mg/l O<sub>3</sub> abgelesen.



## Anleitung zur Bestimmung von Ozon neben Chlor

**CHECKIT®Disc**  
Ozon (DPD)

**Messbereich**  
0 - 1,0 mg/l O<sub>3</sub>

**Bestell-Nr.**  
14 62 70

**Genauigkeit:**

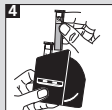
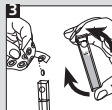
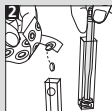
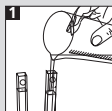
± 5 % vom Messbereichsendwert

**Tabletten**  
DPD No. 4  
DPD Glycine

**Bestell-Nr. per 100 Stück**  
51 12 20 BT  
51 21 70

### Ozon (DPD No. 4 / DPD Glycine-Tablette)

- 1 Beide Küvetten mit der Probe bis zur 10 ml-Marke füllen.
- 2 In eine Küvette eine DPD Glycine-Tablette geben und mit einem Rührstab zerdrücken.
- 3 In beide Küvetten jeweils eine DPD No. 4-Tablette geben. Küvetten verschließen. Tabletten durch Umschwenken auflösen.
- 4 Die Küvette mit der DPD Glycine- und DPD No. 4-Tablette in die linke Kammer des Comparators stellen. Die Küvette, die **nur** die DPD No. 4-Tablette enthält, in die rechte Kammer des Comparators stellen.
- 5 Nach dem Abgleich mit der CHECKIT®Disc wird das Ergebnis in mg/l O<sub>3</sub> abgelesen.



## Instructions for the determination of ozone (DPD)

**CHECKIT®Disc**  
Ozone (DPD)

**Measurement Range**    **Order Code**  
0 - 1,0 mg/l O<sub>3</sub>            14 62 70

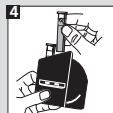
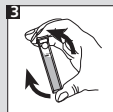
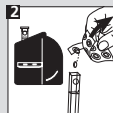
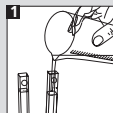
**Accuracy:**                    ± 5 % full scale

**Tablets**  
DPD No. 4

**Order Code (per 100 pcs)**  
51 12 20 BT

### Ozone (DPD) (DPD No. 4 -tablet)

- 1 Fill both cells to the 10 ml mark.
- 2 Place one cell in the left-hand compartment of the comparator as a blank. Add a DPD No. 4 -tablet to the other cell, close it with a lid.
- 3 Swirl until the tablet has dissolved.
- 4 Place this second cell in the right-hand compartment of the comparator.
- 5 Match the two colour fields against north day light and read off the result as mg/l O<sub>3</sub>.



## Instructions for the determination of ozone in the presence of chlorine

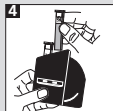
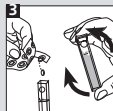
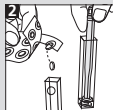
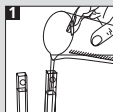
CHECKIT®Disc	Measurement Range	Order Code
Ozone (DPD)	0 - 1,0 mg/l O <sub>3</sub>	14 62 70

**Accuracy:** ± 5 % full scale

Tablets	Order Code (per 100 pcs)
DPD No. 4	51 12 20 BT
DPD Glycine	51 21 70

### Ozone in the presence of chlorine (DPD No. 4 / DPD Glycine-tablet)

- 1 Fill both cells to the 10 ml mark.
- 2 Add a DPD Glycine-tablet to one of the cells.  
Crush the tablet.
- 3 Afterwards add a DPD No. 4 -tablet to each cell.  
Crush the tablets, close the cells with a lid. Swirl until the tablets have dissolved.
- 4 Place the cell with the DPD Glycine tablet **and** the DPD No. 4 -tablet in the left-hand compartment of the comparator. Place the cell which contains **only** the DPD No.4 -tablet in the right compartment of the comparator.
- 5 Match the two colour fields against north day light and read off the result as mg/l O<sub>3</sub>.



## Mode d'emploi pour la détermination du Ozone (DPD)

CHECKIT®Disc

Plage de mesure

Référence de commande

Ozone (DPD)

0 - 1,0 mg/l O<sub>3</sub>

14 62 70

**Precision de la mesure:**

± 5 % de valeur plafond de la plage de mesure

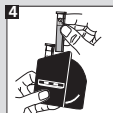
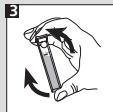
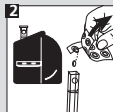
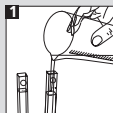
**Pastilles**

**Référence de commande pour 100 pastilles**  
51 12 20 BT

DPD No. 4

### Ozone (DPD No. 4 -pastille)

- 1 Remplir les deux cuves avec l'échantillon jusqu'à la marque 10 ml.
- 2 Placer une cuve dans la chambre de mesure de gauche du comparateur (solution témoin). Ajouter une pastille de DPD No. 4 dans l'autre cuve.
- 3 Refermer la cuve et dissoudre la pastille en agitant la cuve.
- 4 Placer celle-ci dans la chambre de mesure de droite.
- 5 Faire concorder la couleur obtenue avec le CHECKIT®Disc et lire le résultat mg/l O<sub>3</sub>.



## Mode d'emploi pour la détermination du Ozone en présence de chlore

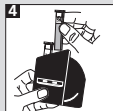
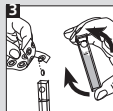
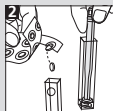
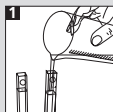
CHECKIT®Disc	Plage de mesure	Référence de commande
Ozone (DPD)	0 - 1,0 mg/l O <sub>3</sub>	14 62 70

**Precision de la mesure:** ± 5 % de valeur plafond de la plage de mesure

Pastilles	Référence de commande pour 100 pastilles
DPD No. 4	51 12 20 BT

### Ozone (DPD No. 4 / DPD Glycine-pastille)

- 1 Remplir les deux cuves avec l'échantillon jusqu'à la marque 10 ml.
- 2 Ajouter une pastille de DPD Glycine dans un cuve. Ecraser la pastille.
- 3 Puis ajouter une pastille DPD No. 4 dans chaque cuve et écraser les pastilles. Fermer la cuvette avec son couvercle. Dissoudre les pastilles en agitant la cuvette.
- 4 Placer la cuve avec DPD Glycine **et** la DPD No.4 - pastille dans la chambre de mesure de gauche. Placer la cuve avec la DPD No.4 -pastille dans la chambre de mesure de droite.
- 5 Faire concorder la couleur obtenue avec le CHECKIT®Disc et lire le résultat en mg/l O<sub>3</sub>.



## Istruzioni per la determinazione di Ozono (DPD)

**CHECKIT®Disc**

Ozono (DPD)

**Campo di misurazione**

0 - 1,0 mg/l O<sub>3</sub>

**Cod. art.**

14 62 70

**Precisione di dischi:** +/- 5% del valore finale.

**Comprese**

DPD No. 4

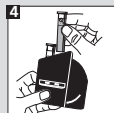
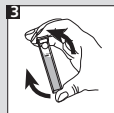
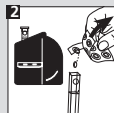
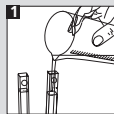
**Cod. art. ogni**

**100 pezzi**

51 12 20 BT

### Ozono (DPD) (DPD No. 4 -comprese)

- 1 Riempire le due cuvette con il campione fino alla tacca 10 ml.
- 2 Porre una cuvetta come bianco nella camera a sinistra del comparatore. Introdurre una compressa DPD No. 4 nell'altra cuvetta.
- 3 Chiudere con il coperchio.
- 4 Far sciogliere la compressa capovolgendo la cuvetta che poi verrà inserita nella camera a destra.
- 5 In seguito alla compensazione con il CHECKIT®Disc il risultato viene letto come mg/l O<sub>3</sub>.





## Istruzioni per la determinazione di Ozono in presenza di cloro

CHECKIT®Disc  
Ozono (DPD)

Campo di misurazione  
0 - 1,0 mg/l O<sub>3</sub>

Cod. art.  
14 62 70

**Precisione di dischi:** +/- 5% del valore finale.

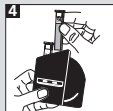
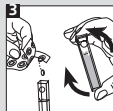
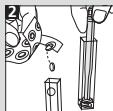
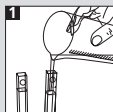
### Comprese

DPD No. 4  
DPD Glycine

Cod. art. ogni  
**100 pezzi**  
51 12 20 BT  
51 21 70

### Ozono in presenza di cloro (DPD No. 4 / DPD Glycine-compresse)

- 1 Riempire le due cuvette con il campione fino alla tacca 10 ml.
- 2 Introdurre una compressa DPD Glycine nell'altra cuvetta.  
Frantumarla con un agitatore pulito.
- 3 Introdurre una compressa DPD No. 4 in ogni cuvetta.  
Chiudere con il coperchio. Far sciogliere la compressa capovolgendo la cuvetta.
- 4 Mette la cuvetta con la tableta Glycine e DPD No.4 nella camera sinistra del comparatore. La cuvetta che contiene **solamente** la tableta DPD No.4 si mette nella camera destra del comparatore.
- 5 In seguito alla compensazione con il CHECKIT®Disc il risultato viene letto come mg/l O<sub>3</sub>.



## Instrucciones para la determinación de Ozono (DPD)

**CHECKIT®Disc**

Ozono (DPD)

**Campo de medición**

0 - 1,0 mg/l O<sub>3</sub>

**Número de pedido**

14 62 70

**Precisión de discos:** ± 5 % del valor final

**Tabletas**

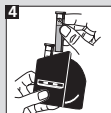
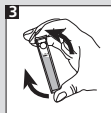
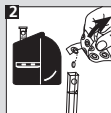
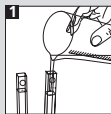
DPD No. 4

**Número de pedido**

51 12 20 BT

### Ozono (DPD) (DPD No. 4 -tableta)

- 1 Llenar ambas cubetas con la prueba hasta la marca de 10 ml.
- 2 Colocar una cubeta como ensayo en blanco en el compartimento izquierdo del Comparador. Añadir a la segunda cubeta una tableta DPD No. 4 y cerrarla con su tapa.
- 3 Agitar hasta la disolución total de la tableta.
- 4 Colocar esta cubeta en el compartimento derecho.
- 5 Una vez realizada la igualación del color producido en la cubeta con el CHECKIT®Disc, leer el resultado de mg/l O<sub>3</sub>.



## Instrucciones para la determinación de Ozono en presencia de cloro

CHECKIT®Disc	Campo de medición	Número de pedido
Ozono (DPD)	0 - 1,0 mg/l O <sub>3</sub>	14 62 70

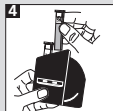
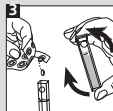
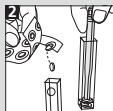
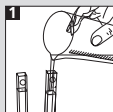
**Precisión de discos:** ± 5 % del valor final

### Tabletas

DPD No. 4	Número de pedido
DPD Glycine	51 12 20 BT
	51 21 70

### Ozono en presencia de cloro (DPD No. 4 / DPD Glycine-tableta)

- 1 Llenar ambas cubetas con la prueba hasta la marca de 10 ml.
- 2 Añadir a una cubeta una tableta DPD Glycine. Machacarla con una varilla.
- 3 Para la determinación, añadir directamente una tableta DPD No. 4 a la cubeta. Añadir otra DPD No. 4 en cada una cubeta y cerrarla con su tapa. Moverlos para disolver las tabletas.
- 4 Poner la cubeta con las tabletas Glycine y DPD No. 4 en el compartimento a la izquierda del comarador. La cubeta que contiene **solamente** DPD No.4 se pone en el comartimento a la derecha.
- 5 Una vez realizada la igualación del color producido en la cubeta con el CHECKIT®Disc, leer el resultado de mg/l O<sub>3</sub>.



<i>Other available tests</i>	<i>Range</i>
<b>Aluminium</b>	0 - 0.3 mg/l Al
<b>Ammonia</b>	0 - 1 mg/l N
<b>Ammonia vario</b>	0 - 0.5 mg/l N
<b>Bromine</b>	0.5 - 5 mmol/l
<b>Chlorine</b>	0 - 1 mg/l Cl <sub>2</sub>
free, combined,	0.1 - 2 mg/l Cl <sub>2</sub>
total	0 - 4 mg/l Cl <sub>2</sub>
<b>Chlorine*</b>	0.02 - 0.3 mg/l Cl <sub>2</sub>
<b>Chlorine Dioxide*</b>	0.01 - 0.2 mg/l ClO <sub>2</sub>
<b>Chlorine HR (total)</b>	10 - 300 mg/l Cl <sub>2</sub>
<b>Chlor vario</b>	0 - 3.5 mg/l Cl
<b>Copper (Cu<sup>2+</sup>)</b>	0 - 1 mg/l Cu
<b>Copper LR*</b>	0 - 1 mg/l Cu
(free + total)	
<b>Copper HR</b>	0 - 5 mg/l Cu
(free + total)	
<b>Copper LR vario*</b>	0 - 1 mg/l Cu
(free)	
<b>Copper HR vario</b>	0 - 5 mg/l Cu
(free)	
<b>DEHA</b>	0 - 0.5 mg/l DEHA
<b>Fluoride</b>	0.2 - 2 mg/l F
<b>Iron LR</b>	0.05 - 1 mg/l Fe
<b>Iron HR</b>	1 - 10 mg/l Fe

<i>Other available tests</i>	<i>Range</i>
<b>Iron TPTZ</b>	0 - 1,8 mg/l Fe
<b>Manganese LR</b>	0.1 - 0.7 mg/l Mn
<b>Manganese VLR*</b>	0.02 - 0.2 mg/l Mn
<b>Molybdate</b>	0 - 100 mg/l MoO <sub>4</sub>
<b>Nitrate LR</b>	0 - 1 mg/l N
<b>Nitrate HR</b>	10 - 100 mg/l NO <sub>3</sub>
<b>Nitrite LR</b>	0 - 0.5 mg/l N
<b>Nitrite LR vario</b>	0 - 0.3 mg/l N
<b>Ozone (DPD)**</b>	0 - 1.0 mg/l O <sub>3</sub>
<b>Ozone (DPD)</b>	0 - 1.0 mg/l O <sub>3</sub>
<b>pH</b>	5.2 - 6.8 pH, 6.0 - 7.6 pH, 6.5 - 8.4 pH, 4 - 10 pH
<b>Phosphate LR</b>	0 - 4 mg/l PO <sub>4</sub>
<b>Phosphate HR</b>	0 - 80 mg/l PO <sub>4</sub>
<b>Phosphate vario</b>	0 - 2.5 mg/l PO <sub>4</sub>
<b>Säurekapazität Ks4.3</b>	0.5 - 5 mmol/l
<b>Silica LR</b>	0.25 - 4 mg/l SiO <sub>2</sub>
<b>Silica vario</b>	0 - 100 mg/l SiO <sub>2</sub>
<b>Silica VLR*</b>	0 - 1 mg/l SiO <sub>2</sub>
<b>Sodium Hypochlorite</b>	2 - 18 % NaOCl
<b>Sulfite LR</b>	0.5 - 10 mg/l SO <sub>3</sub> <sup>2-</sup>
<b>Total Alkalinity</b>	20-240 mg/l CaCO <sub>3</sub>
<b>Zinc</b>	0 - 1 mg/l Zn

\* Only with CHECKIT® Comparator D55 with mirror optics

\*\* in presence of chlorine

Update: [www.tintometer.de](http://www.tintometer.de)  
No.: 00387065

Technical changes without notice  
Printed in Germany 10/10